

Lane/5000

Create new retail checkout experiences with a world of Business Apps



- Enhance the purchasing experience by combining a large touchscreen display within a compact consumer-facing terminal
- Accelerate checkout by offering electronic signature and NFC acceptance
- Leverage a terminal designed for the most demanding retail environment

ingenico



The most advanced designed-for-retail terminal, Lane/5000 combines payment acceptance and third-party apps to reinforce consumer engagement.



Highest security

The Lane/5000 is PCI-PTS 5.x certified. Its Telium TETRA OS uses the latest cryptographic schemes with future-proof key length. Additional anti-theft systems, such as Kensington locks, strengthen security.

All payment options

The Lane/5000 enables NFC couponing and wallet use cases, in addition to EMV Chip & PIN, Swipe & Sign and contactless.

User-friendly and intuitive interface

Featuring enriched multimedia capabilities and a 3.5" color touch screen, Lane/5000 enhances interactivity with consumer during payment and business Apps operations.

Designed for retailers

Conceived for intensive retail usage, the Lane/5000 features a durable signature - capacitive screen, heavy-duty magstripe and smartcard readers optimized for transaction speed, and a multipoint connector for easy integration.



Built-in data capture capabilities

With its optional camera, the Lane/5000 enables alternative payment schemes and unlimited possibilities for business Apps.

Seamless NFC payment experience

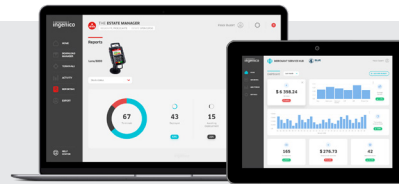
The Lane/5000 makes NFC acceptance easy. Its dedicated and visible reader zone is enhanced with smooth backlit glass. This ergonomic reader offers consumers a seamless experience while improving retailer efficiency.

Electronic signature

The Lane/5000 features durable signature capture capabilities for electronic payments, receipt storage and new business applications such as contracts, warranty programs and enrollment.

Compatible with Ingenico's suite of services

Keeping the solutions connected, the Lane/5000 works in unison with Ingenico's supporting service platforms, meaning merchants will have access to business services such as estate management reporting. Software updates and day-to-day support deliver a hassle-free experience.



Lane/5000 is supported by our Cloud Services

| | | | |
|-----------------------|--|---|---|
| Processor | <ul style="list-style-type: none"> Crypto & Crypto Processor | <ul style="list-style-type: none"> Cortex A5 | ✓ |
| Memory | <ul style="list-style-type: none"> Internal External | <ul style="list-style-type: none"> 512 MB Flash, 512 MB RAM Micro SD up to 32 GB | Optional ✓ |
| OS | | <ul style="list-style-type: none"> Telium TETRA | ✓ |
| SAM | | <ul style="list-style-type: none"> 3 | Optional ✓ |
| Card Reader(s) | <ul style="list-style-type: none"> Magstripe Smart Card Contactless | <ul style="list-style-type: none"> ISO 1/2/3, 500K lifespan EMV Level 1, 500K lifespan EMV Level 1 compliant | <ul style="list-style-type: none"> ✓ ✓ ✓ |
| Display | <ul style="list-style-type: none"> Color | <ul style="list-style-type: none"> 3.5" backlight, QVGA (320x240 pixels) | ✓ |
| Touchscreen | <ul style="list-style-type: none"> Capacitive Resistive | <ul style="list-style-type: none"> Finger & stylus (1Mil lifespan signature) Finger & stylus (300k lifespan signatures) | Optional ✓ |
| Keypad | | <ul style="list-style-type: none"> 15 keys, raised markings, backlit | ✓ |
| Audio | <ul style="list-style-type: none"> Buzzer Audio Jack Speaker | <ul style="list-style-type: none"> Stereo Mono | <ul style="list-style-type: none"> ✓ ✓ |
| Video | <ul style="list-style-type: none"> Video accelerator | <ul style="list-style-type: none"> H264 codec | ✓ |
| Camera | | <ul style="list-style-type: none"> 5M pixels autofocus (QR code library embedded) | Optional ✓ |

| | | | |
|------------------------------|---|---|--|
| Terminal Connectivity | <ul style="list-style-type: none"> Wired Wireless | <ul style="list-style-type: none"> Ethernet 10/100 base T Bluetooth Class 2 Wi-Fi | <ul style="list-style-type: none"> Optional Optional |
| Terminal Connections | <ul style="list-style-type: none"> USB Serial | <ul style="list-style-type: none"> USB Host 2nd USB Host USB Slave 1 RS232 | <ul style="list-style-type: none"> ✓ ✓ ✓ ✓ |
| Power supply | <ul style="list-style-type: none"> Powered USB Powered RS232 Powered Ethernet External power supply | <ul style="list-style-type: none"> 12V (USB retail) 12V PoE 802.3af compliant | <ul style="list-style-type: none"> ✓ ✓ ✓ |
| Stand Mounting | | <ul style="list-style-type: none"> Universal Payment Mount | Optional ✓ |
| Terminal size | | <ul style="list-style-type: none"> 7.4" x 4.3" x 1.9" (189 x 111 x 48 mm) | ✓ |
| Weight | | <ul style="list-style-type: none"> 12.3 oz (350 g) | ✓ |
| Environment | <ul style="list-style-type: none"> Operating temperature Storage temperature Relative humidity | <ul style="list-style-type: none"> 32°F to 122°F (0 to +50°C) -4°F to 131°F (-20 to +70°C) 85% HR at 104°F (+40°C) | <ul style="list-style-type: none"> ✓ ✓ ✓ |
| Accessories | <ul style="list-style-type: none"> Privacy shield Stylus kit | <ul style="list-style-type: none"> PCI compliant | Optional ✓ |
| Security | | <ul style="list-style-type: none"> PCI PTS 5.x | ✓ |



www.ingenico.com

ingenico